



Schematic diagram: BioSmart Set components in function

Extras

Top 3 product characteristics

- Clear water guaranteed through the ideal combination of filter, pump and UVC technology
- Complete, optimally matched sets
- Easy filter maintenance thanks to pollutant level indicator, cleaning handles and sludge drain

Recommendation

The UVC bulbs should be changed at regular intervals, ideally in spring before the season starts, to guarantee the full strength capacity of the UVC light waves!

BIOSMART SETS



Solid flow through filter sets with UVC and filter pump

BioSmart Set 5000



- Suitable for ponds up to 36 m³
- Combination of mechanical biological cleaning and effective UVC technology
- Incl. OASE Clear Water Guarantee*^{P.240}
- Oxygen enrichment through special water channelling
- Cleaning handles for convenient maintenance
- Including displays for pollutant level and water temperature
- Sludge drain for easy removal of coarse debris
- Easy to conceal; the filter can be recessed into the ground to 1/3 of its height
- Filters and pumps are optimally matched
- Incl. 100 ml BioKick Filter Starter*¹

BioSmart Set 5000

- Included in the scope of delivery: 3 m 3/4" hose and OASE filter pump 1500: 25 W; 1500 l/h Qmax; 1.9 m Hmax

BioSmart Set 18000

NEW



BioSmart Set 7000

- Included in the scope of delivery: 3 m 3/4" hose and OASE filter pump 2500: 40 W; 2500 l/h Qmax; 2.2 m Hmax

BioSmart Set 14000

- Included in the scope of delivery: 3 m 3/4" hose and OASE filter pump 3500: 70 W; 3400 l/h Qmax; 2.7 m Hmax

BioSmart Set 18000

- Included in the scope of delivery: Vitronic UVC 18 W; 5 m 1 1/2" hose and OASE AquaMax Eco Classic 5500: 60 W; 5300 l/h Qmax; 2.8 m Hmax

BioSmart Set 24000

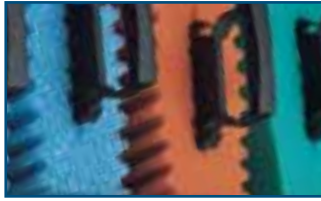
- Included in the scope of delivery: Vitronic UVC 24 W; 5 m 1 1/2" hose and OASE AquaMax Eco Classic 5500: 60 W; 5300 l/h Qmax; 2.8 m Hmax

BioSmart Set 36000

- Included in the scope of delivery: Vitronic UVC 36 W; 5 m 1 1/2" hose and OASE AquaMax Eco Classic 11500: 100 W; 11000 l/h Qmax; 3.3 m Hmax

START

PRODUCT DETAILS



Nitrification and denitrification zones

Toxic ammonia, nitrite and nitrate are transformed into harmless end products in the different sponges.



Temperature display

The thermometer indicates the current water temperature at all times.



Easy maintenance

After activating the cleaning lever, the bottom drain can be opened and coarse debris can be disposed of (only BioSmart Set 18/24/36000)



UVC unit

The UVC unit integrated in the filter or included in the set ensures fast elimination of algae and reduction of pathogens.

Accessories

Replacement bulb UVC

UVC 7 W	Item no. 57111	(Page 222)
UVC 9 W	Item no. 54984	(Page 222)
UVC 11 W	Item no. 56112	(Page 222)
UVC 18 W	Item no. 56236	(Page 222)
UVC 24 W	Item no. 56237	(Page 222)
UVC 36 W	Item no. 55432	(Page 222)

Replacement foam BioSmart 5000/7000/14000

red	Item no. 35791	(Page 221)
blue	Item no. 35792	(Page 221)

Replacement foam BioSmart 18/24/36000

red	Item no. 56677	(Page 221)
blue	Item no. 56678	(Page 221)
green	Item no. 56679	(Page 221)

Discharge pipe

black DN 50/480 mm	Item no. 50829	(Page 223)
black DN 75/480 mm	Item no. 55043	(Page 223)

Connection elbow

black DN 50/45°	Item no. 50833	(Page 223)
black DN 75/45°	Item no. 55044	(Page 223)
black DN 75/87°	Item no. 55045	(Page 223)

T-piece

black 70 mm	Item no. 55046	(Page 223)
-------------	----------------	------------

AquaActiv BioKick 200 ml

To achieve the optimal filter effect »treatment« with OASE BioKick filter starter is recommended. This should be added each time the filter is placed in service (e.g. spring).

Item no. 50295 (Page 175)

TECHNICAL DATA

		BioSmart Set 5000	BioSmart Set 7000	BioSmart Set 14000	NEW BioSmart Set 18000	NEW BioSmart Set 24000	NEW BioSmart Set 36000
Dimensions (L x W x H)	mm	280 x 380 x 410		380 x 560 x 410	559 x 596 x 408	920 x 555 x 405	920 x 600 x 405
Rated voltage		230 V / 50 Hz			220–240 V / 50/60 Hz		
Power consumption UVC	W	11	12	14	18	24	36
Power consumption pump	W	25	40	70	60		100
Power cable length UVC	m	3.00			5.00		
Power cable length pump	m	10.00					
Net weight	kg	5.50	6.16	9.20	13.30	18.20	20.00
Guarantee* ^{P.241}	Years	2					
UVC power	W	7	9	11	18	24	36
Number of blue filter foams	EA	1	2	3	2	4	
Number of red filter foams	EA	1		3	1	4	
Number of green filter foams	EA		–			1	
Temperature display		Yes					
Connections, inlet	mm	19 / 25 / 32 / 38					
Connections, inlet		¾", 1", 1¼", 1½"					
Connections, outlet		DN 50			DN 75		
Connections, sludge discharge	mm	38			–		
Connections, sludge discharge		1½"			DN 50		
Suitable for ponds up to max.	m³	5.0	7.0	14.0	18.0	24.0	36.0
Suitable for ponds with fish stock	m³	2.5	3.5	7.0	9.0	12.0	18.0
Suitable for ponds with koi* ¹	m³	1.3	1.7	3.5	4.5	6.0	9.0
Item no. (GB-Version)		–	50450	50452	56778	56785	56793
Item no.		50525	50449	50451	56777	56781	56789



*1 Note: When planning a new pond with koi stock, please ensure a minimum pond size of 5 m³!